

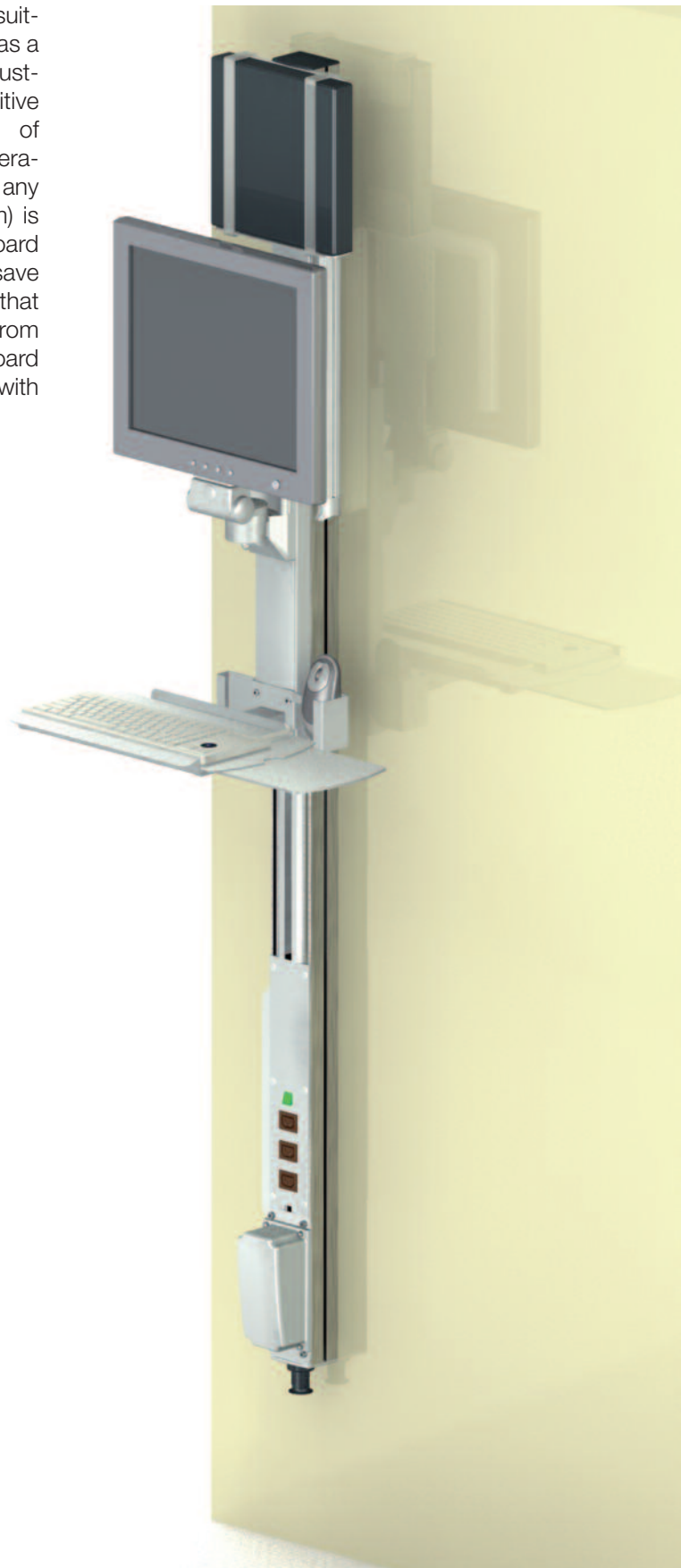
PLUS FOR ERGONOMIC COMFORT WITH MORE FLEXIBILITY IN OPERATION

modul-port

The **modul-port** stationary carrier system has always been suitable for mounting on ceilings, walls, at workstations or for use as a free-standing system on the floor. Optional powered height adjustment provides operating comfort and is therefore a major positive feature for ergonomic application. This latest version of **modul-port** can therefore be adjusted to the appropriate operating conditions at the touch of a button without having to apply any force. Height adjustment (in an adjustment range of 300 mm) is operated using a remote control which is attached to the keyboard holder (with pull-out mousepad and “mouse garage” to save space. The keyboard and screen can be moved as a unit so that they always retain their ergonomically defined separation from each other. There is also an option of folding up the keyboard when not in use. Overall, height adjustment can be carried out with a load of up to 20 kg / 44 lbs.



The **remote control** for variable, powered height adjustment is attached to the keyboard holder to save space. The mouse can also be accommodated in a special holder (“mouse garage”) if it is not being used. This protects it from falling out.



PLUS FOR ERGONOMIC COMFORT WITH MORE FLEXIBILITY IN OPERATION

modul-port

Designation: **modul-port** with electric height adjustment

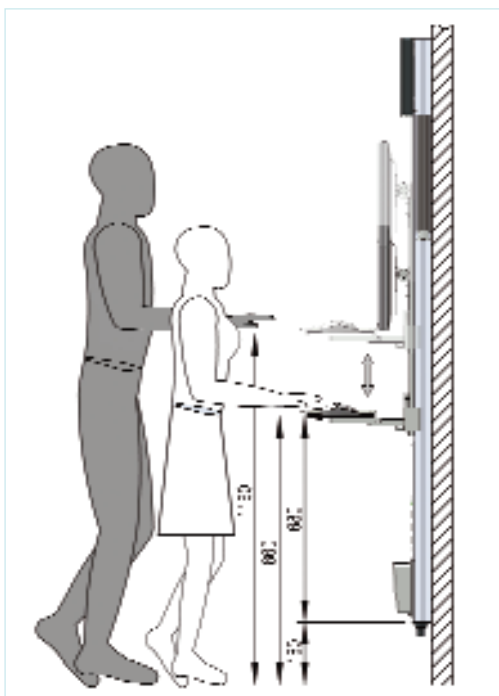
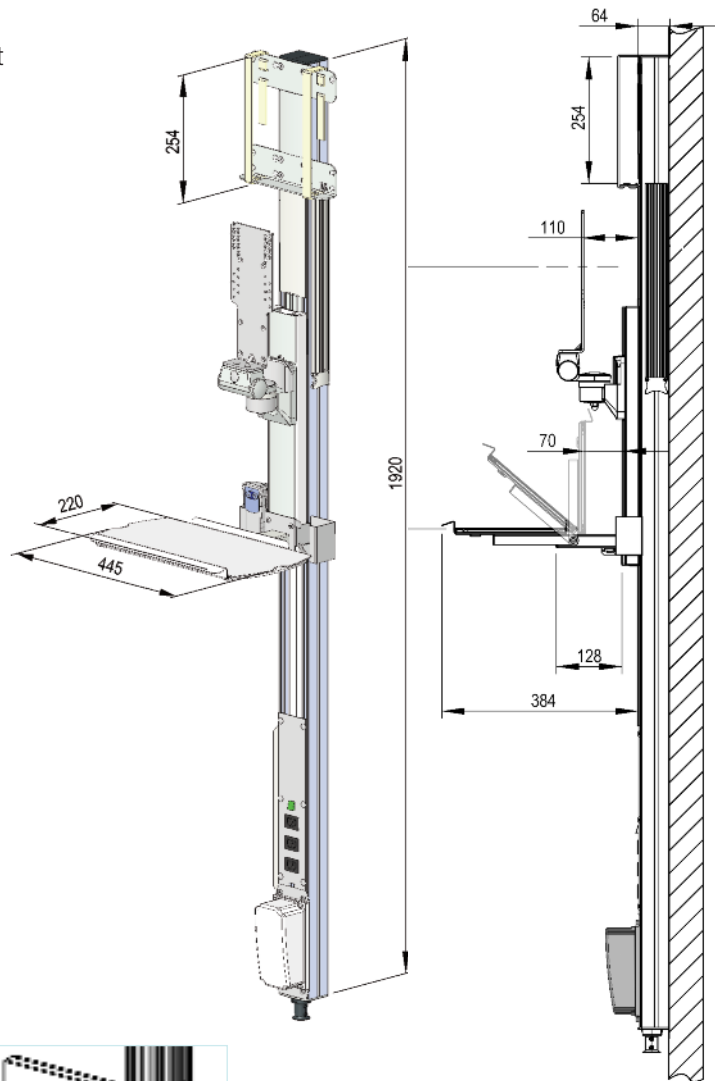
Order number: TS.9028.991

Support extrusion for wall mounting with 60 U ¹⁾ and an overall height of 1920 mm, fitted with:

- 1 electric height adjuster with power pack (input voltage: 230 V and 50 / 60 Hz)
- 1 remote control for electric height adjustment
- 1 monitor mount with VESA 100 adapter up to 16 kg / 35.2 lbs monitor weight
- 1 keyboard shelf with pull-out mousepad (right / left), tiltable
- 1 computer holder
- 4 cable ducts with integrated cable strain reliefs

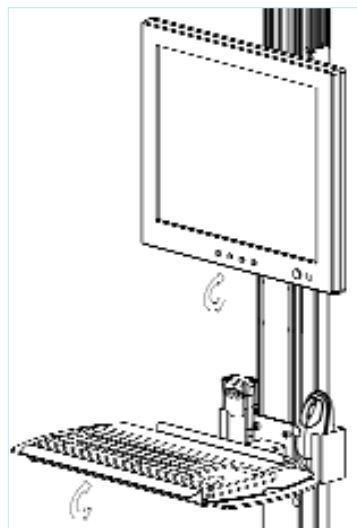
Payload (height adjustment): up to max. 20 kg / 44 lbs
Finish:

- RAL 7035 light grey powder-coated



modul-port can be adjusted to the appropriate working position within a range of 300 mm at the touch of a button without having to apply any force to create **ideal ergonomic working conditions**.

¹⁾ 1 U = 32 mm



The **monitor mount** can be tilted through $\pm 15^\circ$ and – fitted with a VESA 100 adapter – is suitable for monitors with a total weight of 16 kg / 35.2 lbs.

The **keyboard holder** can be folded away to save space when not in use. The integrated mousepad can be pulled out to the left and right.



ITD GmbH

Grünwalder Weg 13a · 82008 Unterhaching · Germany
Tel. +49-89-61 44 25-0 · Fax +49-89-61 44 25-20
sales@itd-cart.com · www.itd-cart.com